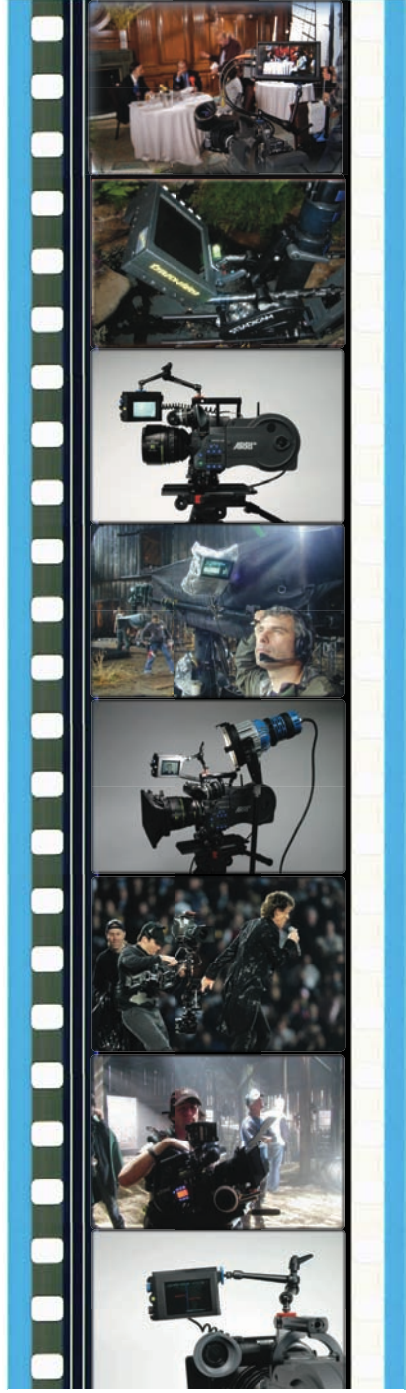


transvideo

Equipment for Film and Digital Cinema - Avionic systems



www.transvideointl.com

FILM & DIGITAL CINEMATOGRAPHY
PRODUCT LINE - April 2008

Since 1985, **TRANSVIDEO** has provided **STATE OF THE ART**, electronic equipment for the **Film Industry**.

1990 - TRANSVIDEO introduced the first professional Flat Panel Monitor with a dozen of interchangeable backs to the **Broadcast Industry**, the 6" High-resolution modular monitor **LCM06-HR**. **18 years later** most of these monitors are still in use.

1994 - TRANSVIDEO sets the **Film Industry** standard with the design from **PANAVISION** of the first 5" **Rainbow** monitor. For almost 15 years, thousands of 5" **Rainbow** are used on sets every day and all over the world by the most famous **Directors of Photography**.

2007 - Introduction of the CineMonitor **HD** featuring Transvideo's proprietary technology with Real Frame Rate processing that allows true monitoring of in-camera images.

For the past 25 years, **TRANSVIDEO** has pioneered Flat Panel technology. Through constant Research & Development, **TRANSVIDEO** has an unmatched expertise in professional displays.

Currently exporting from its French headquarters, throughout the five continents, **TRANSVIDEO** is supported by a network of distributors and agents.

TRANSVIDEO designs high-end equipment for **Film**, **Digital Cinema**, **Broadcast** and **Avionics** Industries

TRANSVIDEO monitors are part of **AIRBUS A32x** series and **A380** in cockpit or cabin passenger.



Starlite <i>Color</i>	5
Starlite <i>DV</i>	7
Rainbow <i>II</i>	9
Rainbow <i>Xtreme</i>	11
Rainbow <i>II</i> 16:9	13
Rainbow <i>II</i> 16:9 RF	15
Rainbow <i>UHF</i>	17
CineMonitor <i>IIIa</i>	19
CineMonitor <i>HD</i> intro	21
CineMonitor <i>HD</i> ⁶	23
CineMonitor <i>HD</i> ⁶ <i>SBL</i>	23
CineMonitor <i>HD</i> ⁸	25
CineMonitor <i>HD</i> ¹² <i>SB</i>	27
CineMonitor <i>HD</i> ¹⁵	29
CineMonitor <i>HD</i> ¹⁵ <i>SB</i>	29
TITAN	31
HERMES & PEGASUS	33
FormatConverter	34
FramelineGenerator	35
BodyRig Mounting System	37
Accessories	39
SmartDV Battery Backs	40

The new 4" *StarliteColor* monitor unique digital processor displays an exceptional image quality when used on film or video cameras.

It is very user friendly: basic and advanced functions are easily accessed by turning or pushing the knobs.

The basic monitor includes the Waveform Y function.

The Virtual Horizon and SuperBright options may be added.

With the SuperBright option, the 4" *StarliteColor* monitor is designed to operate in full sun even with intense reflected light such as on snow or sea.

The 4" *StarliteColor* monitor is manufactured according to Transvideo's unmatched quality standards. The aluminum anti-vibration housing and optical protective glass ensure trouble-free operation in the most challenging environments.

Specifications

Input	CVBS 1V/75Ω
Standard	PAL/SECAM/NTSC
Display Mode	Color, B&W, Green
Display	4" AMLCD RGB Stripe
Contrast ratio	Max 700:1
Sight angle	±85° H&V
Brightness	Standard 450Nits SuperBright >1000Nits
Dimensions	130 (l) x 76 (h) x 36,5 (d) mm
Weight	350 grams
Power	8.5 - 36 VDC
Pwr Cons.	8.5W Typ 700mA/12VDC
Connector	Fisher 4pts 1 GND, 2 Video GND, 3 Video, 4 DC
Operating Temp	-30°C +55°C
Storage Temp	-40°C +80°C

Ordering Codes

910TS0055 4" *StarliteColor*
914TS0006 SuperBright option

910TS0058 VirtualHorizon option
918TS0078 Slide for Starlite
918TS0087 Sun&Night Hood for 4"
918TS0109 Raincover for 4"



François Perrier "The Covenant"

MAIN APPLICATIONS

- FILM
- HIGH END DIGITAL DV
- ENG
- FILM SCHOOL

4"

4:3
16:9

OSD
MENU

FULL
UNDERSCAN
OVERSCAN

Blue
Check

Auto Rev
H&V Flip

Green
Screen

Horizon

Waveform

Latency
<1Frame



Specific Accessories & Options

Optional VirtualHorizon



techBright™
superology

4" Sun & Night Hood



Slide



Transvideo new 4" *StarliteDV* is specifically designed for mini DV cameras. It is a low professional color viewfinder with integrated mini DV battery socket to compensate for the missing DC output on these cameras. Streamlined, it features a single connector (BNC for video in). It is very user friendly: basic and advanced functions are easily accessed by turning or pushing the knobs. The basic monitor includes the Waveform Y function. The Virtual Horizon and SuperBright options may be added. With the SuperBright option, the 4" *StarliteColor* monitor is designed to operate in full sun even with intense reflected light such as on snow or sea. The 4" *StarliteDV* monitor is manufactured according to Transvideo's unmatched quality standards. The aluminum anti-vibration housing and optical protective glass ensure trouble-free operation in the most challenging environments.

Specifications

Input	CVBS 1V/75Ω
Standard	PAL/SECAM/NTSC
Display Mode	Color, B&W, Green
Display	4" AMLCD RGB Stripe
Contrast ratio	Max 700:1
Sight angle	±85° H&V
Brightness	Standard 450Nits SuperBright >1000Nits
Dimensions	130 (l) x 76 (h) x 36,5 (d) mm
Weight	350 grams
Power	With DV battery. CANON, JVC, PANASONIC, SONY.
Pwr Cons.	8.5W Typ
Connector	Video BNC
Operating Temp	-30°C +55°C
Storage Temp	-40°C +80°C

Ordering Codes

910TS0065 4" *StarliteDV*

914TS0006 SuperBright option

910TS0058 VirtualHorizon option

918TS0078 Slide for Starlite



MAIN APPLICATIONS

- HIGH END DIGITAL DV
- ENG
- FILM SCHOOL

4"

4:3
16:9

OSD
MENU

FULL
UNDERSCAN
OVERSCAN

Blue Check

Auto
Reverse
H&V Flip

Green
Screen

Horizon

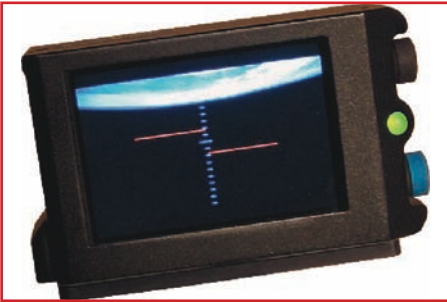
Waveform

Latency
<1Frame



Specific Accessories & Options

Optional VirtualHorizon



technoBright™
super technology

4" Sun & Night Hood



Slide



The Rainbow *II*, with outstanding viewing angle and optimized performance in full sun, combines the simplicity of the original 5" Rainbow with advanced functions. The image can be displayed in Full, Broadcast or Under-Scan Modes. With a built-in 16:9 Format Converter, the 5" Rainbow *II* can be switched between 4:3 and 16:9.

With the Anamorphic option added the monitor can be switched between 4:3, 16:9 and Anamorphic.

The 5" Rainbow *II* offers a Processed Video Out: if the monitor is set in 16:9 the output will also be 16:9. The Auto-Reverse function is especially designed for Body-mount Operators: the image is automatically reversed when the monitor is turned upside down.

The SuperBright option is also available.

With a latency of less than a frame and crisp image, it is the worldwide best-seller with Operators and assistants.

Specifications

Input	CVBS 1V/75Ω
Standard	PAL/SECAM/NTSC
Display Mode	Color, B&W
Display	5" AMLCD RGB Stripe
Contrast ratio	Max 700:1
Sight angle	±85° H&V
Brightness	Standard 350Nits SuperBright >700Nits
Dimensions	135 (l) x 100 (h) x 57 (d) mm
Weight	620 grams
Power	10 - 36 VDC
Pwr Cons.	12.5 W
Video Connector	BNC
Accessory con.	HIROSE 6 (2 video in, 3 DC In, 6 Video out processed, 1, 4 & 5 Gnd)
Power connector	XLR4 -1, +4
Operating Temp	-30°C +60°C
Storage Temp	-40°C +80°C

Ordering Codes

910TS0032 RainbowII

910TS0024 RainbowII Anamorphic

914TS0006 SuperBright option

918TS0085 SpiritLevel for Rainbow

918TS0082 Sun&Night Hood for 5"

918TS0035 Raincover for 5"



Jean-Pierre Jeunet "Amélie"

MAIN APPLICATIONS

- FILM
- HIGH END DIGITAL DV
- ENG
- FILM SCHOOL

Rainbow *II* 5"

5"

4:3
16:9

Anamorphic
1:2.35

FULL
UNDERSCAN
OVERSCAN

Auto
Reverse
H&V Flip

Blue
Check

OSD
MENU

Latency
<1Frame



Specific Accessories & Options

Spirit Level



technology
Bright
super

5" Sun & Night Hood



Raincover



The new born in the Rainbow family. The 5" RainbowI was designed in 1994 for the classic Panavision Platinum camera. The 5" RainbowII launched in 2002 includes advanced functions such as built-in Format Converter, Blue Check, Green Screen, Flips etc...

The new 5" *RainbowX^{xtreme}* offers sophisticated functions such as Waveform Y, Virtual Horizon, Full Color Frameline & Matting generator, and Tally. However, it remains user-friendly:

The *RainbowX^{xtreme}* can have its functions de-activated to operate like a 5" RainbowII or even like a 5" RainbowI.

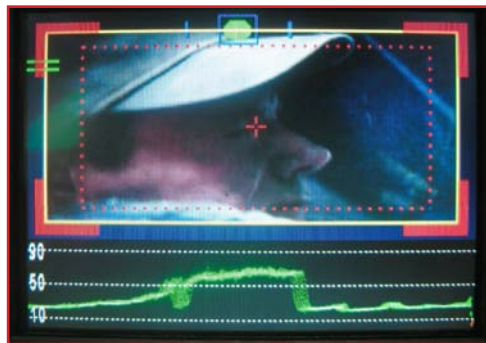
The 5" *RainbowX^{xtreme}* can also be ordered in SuperBright model.

Specifications

Input	CVBS 1V/75Ω
Standard	PAL/SECAM/NTSC
Display Mode	Color, B&W
Display	5" AMLCD RGB Stripe
Contrast ratio	Max 700:1
Sight angle	±85° H&V
Brightness	Standard 350Nits SuperBright >700Nits
Dimensions	135 (l) x 100 (h) x 57 (d) mm
Weight	620 grams
Power	10 - 36 VDC
Pwr Cons.	12.5 W
Video Connector	BNC
Accessory con.	HIROSE 6 (2 video in, 3 DC In, 6 Video out processed, 1, 4 & 5 Gnd)
Power connector	XLR4 -1, +4
Operating Temp	-30°C +60°C
Storage Temp	-40°C +80°C

Ordering Codes

910TS0063 *RainbowX^{xtreme}*
914TS0006 SuperBright Option
918TS0085 SpiritLevel for Rainbow
918TS0082 Sun&Night Hood for 5"
918TS0035 Raincover for 5"



MAIN APPLICATIONS

- FILM
- HIGH END DIGITAL DV
- ENG
- TV Stations

Rainbow Xtreme 5"

5"

4:3
16:9

Anamorphic
1:2.35

FULL
UNDERSCAN
OVERSCAN

Blue Check

Auto
Reverse
H&V Flip

OSD
MENU

Latency
<1Frame



Specific Accessories & Options

Spirit Level



technology
Bright
super

5" Sun & Night Hood



Raincover



Transvideo's 6.5" Rainbow *II* Monitor is a professional native 16:9 LCD monitor, switchable between 16:9, 4:3 and Anamorphic. The Digital Zoom Function enlarges the center of the image in 4:3 and Anamorphic. The image can be displayed in Full, Broadcast or Under-Scan Modes. Light and compact it is ideal for on-board camera use. This monitor is designed to be used without hood in full sun. The Sharpness function facilitates focus. With its low power draw it can be powered from the camera battery. The SuperBright option is additionally available for viewing in intense reflected light such as on snow or sea.

Specifications

Input	CVBS 1V/75Ω
Standard	PAL/SECAM/NTSC
Display Mode	Color, B&W
Display	6.5" AMLCD RGB Stripe
Contrast ratio	Max 700:1
Sight angle	±65°H, +50°/-65°V
Brightness	Standard 420Nits SuperBright >900Nits
Dimensions	163(l) x 100(h) x 58.5(d) mm
Weight	715 grams
Power	10 - 36 VDC
Pwr Cons.	13.2 W
Video Connector	BNC
Accessory con.	HIROSE 6 (2 video in, 3 DC In, 6 Video out processed, 1, 4 & 5 Gnd)
Power connector	XLR4 -1, +4
Operating Temp	-30°C +60°C
Storage Temp	-40°C +80°C

Ordering Codes

910TS0035 RainbowII16:9

914TS0006 SuperBright option

918TS0085 SpiritLevel

918TS0099 Sun&Night Hood for 6.5"

918TS0048 Raincover for 6.5"



Thomas English

MAIN APPLICATIONS

- FILM
- HIGH END DIGITAL DV
- ENG
- STEADICAM

Rainbow *II* 6.5"

6.5"

4:3
16:9
1:1.2.35

OSD
MENU

FULL
UNDERSCAN
OVERSCAN

H&V FLIP
Auto Rev

Blue
Check

Anamorphic
1:2.35

Latency
<1Frame



Specific Accessories & Options

Spirit Level



technology
Bright
super

6.5" Sun & Night Hood



Raincover



Transvideo's 6.5" *Rainbow* RF Wireless Monitor includes an integrated Titan video receiver or transmitter. Both models feature an XLR4 for power input and can be ordered with professional battery sockets or with Smart Mini DV battery backs.

It can be quickly switched between 4 channels.

In addition, 2 external signals can also be wired to the monitor.

The image displayed on the monitor is also the one transmitted. This monitor is designed to be used without hood in full sun. Light, compact and very rugged, the 6.5" *Rainbow* RF Wireless Monitor is the perfect Director's monitor.

Specifications

Input	CVBS 1V/75Ω
Standard	PAL/SECAM/NTSC
Display Mode	Color, B&W
Display	6.5" AMLCD RGB Stripe
Contrast ratio	Max 700:1
Sight angle	±65°H, +50°/-65°V
Brightness	Standard 420Nits SuperBright >900Nits
Dimensions	163(l) x 100(h) x 58.5(d) mm
Weight	800 grams
Power	10 - 36 VDC
Pwr Cons.	15 W
Video Connector	BNC
Accessory con.	HIROSE 6 (2 video in, 3 DC In, 6 Video out processed, 1, 4 & 5 Gnd)
Power connector	XLR4 -1, +4
Operating Temp	-30°C +60°C
Storage Temp	-40°C +80°C

Ordering Codes

910TS0043 RII RF Rx
910TS0041 RII RF Tx
918TS0134 Remote handle
914TS0006 SuperBright option
918TS0085 SpiritLevel
918TS0099 Sun&Night Hood for 6.5"
918TS0108 Raincover for 6.5"RF
918TS0125 Battery back / pro battery
918TS0126 Battery back / DV batteries



Hervé Colosio "Thalassa"

MAIN APPLICATIONS

- FILM
- ENG
- STEADICAM

Rainbow *RF* 6.5"

6.5"

4:3
16:9
1:1.2.35

OSD
MENU

FULL
UNDERSCAN
OVERSCAN

H&V FLIP

Auto
Reverse

Anamorphic
1:2.35

Latency
<1Frame

Included
Rx or Tx



Specific Accessories & Options

Spirit Level



technology
Bright
super



Walnut wood
remote handle

6.5" Sun & Night Hood



Raincover



Transvideo's 6.5" *Rainbow UHF* Wireless Monitor includes an integrated UHF video receiver. Both models feature an XLR4 for power input and can be ordered with professional battery sockets or with Smart Mini DV battery backs.

Two versions are available, M/N for USA, Canada, Korea & Japan. BG/DK/I/L for other countries in the world.

In addition, 2 external signals can also be wired to the monitor.

This monitor is designed to be used without hood in full sun. Light, compact and very rugged, the 6.5" *Rainbow UHF* Wireless Monitor is the perfect Director's monitor.

An optional walnut handle allows to remote the receiver.

The monitor includes a V-Lock battery socket.

Specifications

Input	CVBS 1V/75Ω
Standard	PAL/SECAM/NTSC
Display Mode	Color, B&W
Display	6.5" AMLCD RGB Stripe
Contrast ratio	Max 700:1
Sight angle	±65°H, +50°/-65°V
Brightness	Standard 420Nits SuperBright >900Nits
Dimensions	163(l) x 100(h) x 58.5(d) mm
Weight	800 grams
Power	10 - 36 VDC
Pwr Cons.	15 W
Video Connector	BNC
Accessory con.	HIROSE 6 (2 video in, 3 DC In, 6 Video out processed, 1, 4 & 5 Gnd)
Power connector	XLR4 -1, +4
Operating Temp	-30°C +60°C
Storage Temp	-40°C +80°C

Ordering Codes

910TS0062 *Rainbow UHF* L/BG/DK/I

910TS0069 *Rainbow UHF* M/N

918TS0134 Remote handle

914TS0006 SuperBright option

918TS0085 SpiritLevel

918TS0099 Sun&Night Hood for 6.5"

918TS0108 Raincover for 6.5"RF

918TS0125 Battery back / pro battery

918TS0126 Battery back / DV batteries



Walnut wood
remote handle

MAIN APPLICATIONS

- FILM
- ENG
- STEADICAM

Rainbow UHF

6.5"

4:3
16:9
1:1.2.35

OSD
MENU

FULL
UNDERSCAN
OVERSCAN

H&V FLIP

Auto
Reverse

Anamorphic
1:2.35

Latency
<1Frame

Included
UHF Rx



Specific Accessories & Options

Spirit Level



technology
Bright
super

6.5" Sun & Night Hood



Raincover



After listening to Directors, Operators and Assistants for several years, your new 6" *CineMonitorIII* is born. Ideal for body rigs, it is also the only monitor offering a comprehensive voltage monitoring. The Auto-Reverse function allows to go from high-mode to low-mode without repositioning the monitor.

The 6" *CineMonitorIII* functions include: Sharpness to facilitate focus pulling, Zoom in all ratios to enlarge the TV pumpkin area, Move to recenter the ground glass on the screen, Freeze, Replay and Superimpose for frame matching and still frame reviewing, Blue Check, Voltage monitoring, and more...

Specifications

Input	CVBS 1V/75Ω
Standard	PAL/SECAM/NTSC
Display Mode	Color, B&W, Green
Display	6" AMLCD RGB Stripe
Contrast ratio	Max 450:1
Sight angle	±70°H, +70°/-60°V
Brightness	Standard 900Nits SuperBright >1200Nits
Dimensions	182(l) x 112(h) x 70(d) mm
Weight	980 grams
Power	9 - 36 VDC
Pwr Cons.	13 W
Video Connector	BNC
Accessory con.	HIROSE 10
Power connector	XLR4 -1, +4
Operating Temp	-30°C +65°C
Storage Temp	-40°C +80°C

Ordering Codes

911TS0030 *CineMonitorIII*

914TS0006 SuperBright option

918TS0086 SpiritLevel

918TS0082 Sun&Night Hood for 6"

918TS0034 Raincover for CineIII



David Eubanks "I Love Huckabee"

MAIN APPLICATIONS

- FILM
- STEADICAM

6"

4:3
16:9
1:1.2.35

OSD
MENU

FULL
UNDERSCAN
OVERSCAN

H&V FLIP

Auto
Reverse

Anamorphic
1:2.35

Latency
<1Frame

ZOOM

Freeze
Recall
Superimpose



Specific Accessories & Options

Spirit Level



technology
Bright
super

6" Sun & Night Hood



Raincover



The new *CineMonitorHD* family sets a standard of excellence in the world of the high definition monitoring.

TRANSVIDEO's proprietary processor in conjunction with RealFrameRate RFR™ processing gives a crystal clear picture without aliasing or blur in motions. With a very friendly user-interface, the Operator's attention remains on the image framed rather than on the equipment.

The *CineMonitorHD* family is based on the same electronic design. Different size and models are available from 6" to 15", some of them include the SuperBright technology, allowing outstanding brightness and viewability in full sun.

Some specific features are available as option. The basic version includes all features needed by the majority of users.

Standard features

Accepts all SDI, analog HD & SD video signals
Luminance waveform monitor
Tally light
16:9 switchable 4:3 & anamorphic

Calibration

The white point of each monitor is calibrated to match D56 and D65 (Rec.709). A calibration option is available, it gives the possibility to remote a Minolta CA-210 color analyzer, the remote software and pattern generator are embedded in the monitor.

Optional features

Option	Description	Ordering code
HD Frameline	Generates 3 coloured frameline with or without center cross.	917TS0018
HD Virtual Horizon	Adds a colour coded electronic bubble with several representations. The sensor is embedded in the CineMonitorHD	917TS0019
Advanced Measurement Tools	Adds the RGB waveform with individual representation or parade mode, Vectorscope and Histogram.	917TS0023
3D View	Allows correlation of two synchronous HD camera (Only on the CineMonitorHD6)	917TS0028

Common Specifications

Standard	HD 720p, 1080p&i SD Pal Secam NTSC
Display Mode	Color, B&W, Green
Display	AMLCD RGB Stripe
Power	10 - 36 VDC with Galvanic Insulation
Video Connector	BNC
Power connector	XLR4 -1, +4
Operating Temp	-20°C +55°C
Storage Temp	-40°C +80°C

MAIN APPLICATIONS

- Digital Cinematography
- Hi-Speed Digital video
- STEADICAM®
- Helicopter (SB versions)
- Harsh environment

CineMonitor HD family

4:3
16:9
1:1.2.3.5

RFR™
process

TALLY

Waveform
Vector
Histogram

H&V FLIP
Auto
Reverse

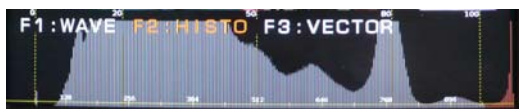
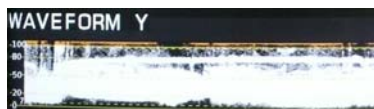
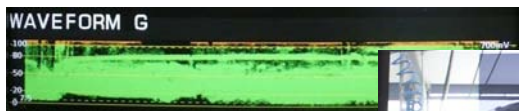
Latency
<1Frame

ZOOM

D56 - D65
Manual
color cal

Safe area
markers

Gamma
Adjustable



The *CineMonitor*^{HD6} is the compact version of the *CineMonitor*^{HD}. With only 1.38 Kg (3.0lbs) and 14.5 W for the power consumption, this monitor is ideal if you need a compact and high quality HDTV monitor.

The *CineMonitor*^{HD6} *SBL* is a SuperBright evolution of the *CineMonitor*^{HD6}. This monitor provides a reduced weight (1.19 Kg, 2.6lbs) and a new LED backlight offering high brightness (1000Nits) for outside operation with a reasonable power consumption of 15.5 W. The viewing angle have been optimized for bodyrig operation.

The standard delivery is with analog and SDI HD&SD inputs, on special request the monitor can be delivered with 2 SDI inputs and 1 reclocked output.

Specifications

Input	1 x HD/SD SDI + 1 Rck out 1 x CVBS (PAL / NTSC) + Loop-through. 1 x Multi (YPrPb / RGB) or 2 x HD/SD SDI + 1 Rck out
Dimensions	Depth 58 mm/2.3" Width 195 mm/7.7" Height 160 mm/6.3"

CineMonitor^{HD6}

Contrast ratio	Max 500:1
Sight angle	±65°H, +65°/-50°V
Brightness	350 Nits
Weight	1380 grams/3.0lbs
Power Cons.	14.5W

CineMonitor^{HD6} *SBL*

Contrast ratio	Max 600:1
Sight angle	±80°H, +60°/-80°V
Brightness	1000 Nits
Weight	1187 grams/2.6lbs
Power Cons.	15.5W

Ordering Codes

917TS0016 *CineMonitor*^{HD6}
 917TS0025 *CineMonitor*^{HD6} SDI only
 917TS0031 *CineMonitor*^{HD6} *SBL*
 917TS0032 *CineMonitor*^{HD6} *SBL* SDI only

917TS0018 HR VirtualHorizon
 917TS0019 HR Frameline
 917TS0023 Advanced Measurement tools
 (RGB WFM, Vector, Histogram)
 917TS0028 3D View (only with dual SDI)
 917TS0021 Remote calibration
 918TS0135 Sun&Night Hood
 918TS0158 Sun&Night Hood with extension
 918TS0136 Raincover
 918TS0137 Battery Back (Standard V-Lock)
 918TS0151 Carbon Handle



CineMonitorHD⁶

CineMonitorHD⁶ SBL



6"

4:3
16:9
1:1.2.35

RFR™
process

TALLY

Waveform
Vector
Histogram

H&V FLIP
Auto
Reverse

Latency
<1Frame

ZOOM

D56 - D65
Manual
color cal

Safe area
markers

SBL = 1000 Nits

Specific Accessories & Options

technology **Bright**
super



Carbon handle for CineMonitorHD
Raincover



6"HD Sun & Night Hood



The new *CineMonitor*^{HD}⁸ sets a standard of excellence in the world of the high definition monitoring.

TRANSVIDEO's proprietary processor in conjunction with RealFrameRate RFR™ processing gives a crystal clear picture without aliasing or blur in motions.

With a very friendly user-interface, the Operator's attention remains on the image framed rather than on the equipment.

Standard features

Accepts all SDI, HD & SD video signals.

Waveform monitor.

16:9 switchable 4:3 & anamorphic Safe Area marker.

User selectable pre-calibrated color temperatures.

User adjustable Gamma.

Zoom function.

Energy-saver mode.

Specifications

Input	1 x HD/SD SDI + 1 Rck out 1 x CVBS (PAL / NTSC) + Loop-through. 1 x Multi (YPrPb / RGB)
Standard	720p, 1080p&i, SD, PAL, SECAM, NTSC
Display Mode	Color, B&W, Green
Display	8" AMLCD RGB Stripe
Contrast ratio	Max 500:1
Sight angle	±85° H & V
Brightness	450Nits
Dimensions	Depth 62 mm/2.44" Width 215 mm/8.46" Height 183 mm/7.20"
Weight	1680 grams/3.7lbs
Power	10 - 36 VDC with Galvanic Insulation
Pwr Cons.	17.5 W
Video Connector	BNC
Power connector	XLR4 -1, +4
Operating Temp	-20°C +55°C
Storage Temp	-40°C +80°C

Ordering Codes

917TS0017 *CineMonitor*^{HD}⁸

917TS0018 HR VirtualHorizon

917TS0019 HR Frameline

917TS0023 Advanced Measurement tools
(RGB WFM, Vector, Histogram)

917TS0021 Remote calibration

918TS0142 Sun&Night Hood

918TS0159 Sun&Night Hood with extension

918TS0136 Raincover

918TS0137 Battery Back (Standard V-Lock)

918TS0151 Carbon Handle



CineMonitorHD⁸

8"

4:3
16:9
1:1.2.35

RFR™
process

TALLY

Waveform
Vector
Histogram

H&V FLIP
Auto
Reverse

Latency
<1Frame

ZOOM

D56 - D65
Manual
color cal

Safe area
markers



Specific Accessories & Options



8"HD Sun & Night Hood

Carbon handle for CineMonitorHD



Raincover



The new *CineMonitor*^{HD}^{L2}*SB* is the latest Transvideo's development for the high end multipurpose field monitoring. Initially developed for intensive use with daylight conditions in helicopters this HD/SD monitor is perfect to be used on the field. TRANSVIDEO's proprietary processor in conjunction with RealFrameRate RFR™ processing gives a crystal clear picture without aliasing or blur in motions. With a very friendly user-interface, the Operator's attention remains on the image framed rather than on the equipment.

The new *CineMonitor*^{HD}^{L2}*SB* includes a battery socket (V-Lock as standard, Anton Bauer on request)

Specifications

Input	1 x HD/SD SDI + 1 Rck out 1 x CVBS (PAL / NTSC) + Loop-through. 1 x Multi (YPrPb / RGB)
Display	12" AMLCD RGB Stripe
Contrast ratio	Max 500:1
Sight angle	±85° H & +70°-80°V
Brightness	1100Nits
Dimensions	Depth 70 mm/2.76" Width 297 mm/11.69" Height 255 mm/10.03"
Weight	3660 grams / 8,1 lbs
Power	11 - 36 VDC with Galvanic Insulation V-Lock battery socket included
Power Cons.	47 W

Ordering Codes

917TS0033 *CineMonitor*^{HD}^{L2}*SB*

917TS0018 HR VirtualHorizon

917TS0019 HR Frameline

917TS0023 Advanced Measurement tools
(RGB WFM, Vector, Histogram)

918TS0151 Carbon Handle



CineMonitor^{HD} 12" SB

12"

4:3
16:9
1:1.2.35

RFR™
process

TALLY

Waveform
Vector
Histogram

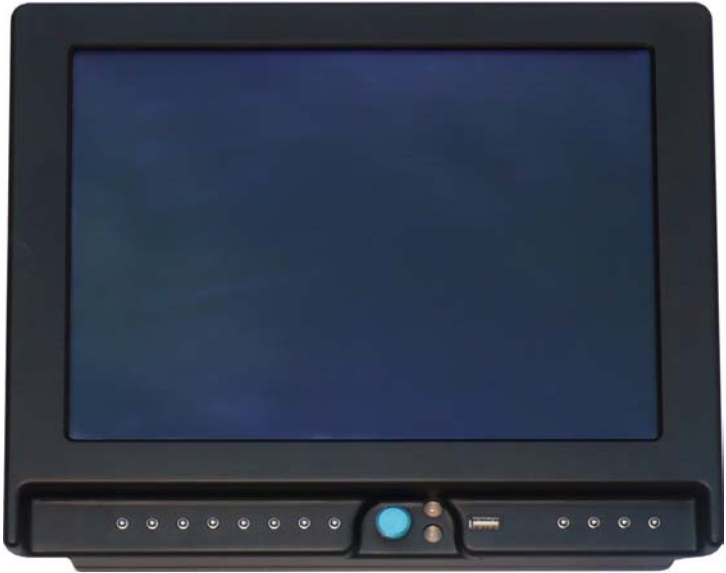
H&V FLIP
Auto
Reverse

Latency
<1Frame

ZOOM

D56 - D65
Manual
color cal

Safe area
markers



techBright™
superology



Carbon handle for CineMonitorHD

The *CineMonitor^{HD} 15 Studio* is the largest version of the *CineMonitor^{HD}*. The standard version offers the best possible viewing angle with 170° for vertical and horizontal. This version is preferable for studio environment when the accuracy of colorimetry and picture rendering is essential.

The *CineMonitor^{HD} 15 SB* is a SuperBright evolution of the *CineMonitor^{HD} 15*. This monitor provides a very high brightness of **1500 Nits** for outside operation and on board helicopter use. The power consumption is of 50W only.

Both version include a battery socket (V-Lock as standard, Anton Bauer on request)

Specifications

Input	1 x HD/SD SDI + 1 Rck out 1 x CVBS (PAL / NTSC) + Loop-through. 1 x Multi (YPrPb / RGB)
Dimensions	Depth 60 mm/2.3" Width 343 mm/13.5" Height 303 mm/11.92"
Power	11 - 36 VDC with Galvanic Insulation V-Lock battery socket included

Ordering Codes

917TS0029 *CineMonitor^{HD} 15 Studio*

917TS0030 *CineMonitor^{HD} 15 SB*

917TS0018 HR VirtualHorizon

917TS0019 HR Frameline

917TS0023 Advanced Measurement tools
(RGB WFM, Vector, Histogram)

CineMonitor^{HD} 15 Studio

Contrast ratio	Max 700:1
Sight angle	±85° H & V
Brightness	350 Nits
Weight	4290 grams/9.44lbs
Power Cons.	34 W

CineMonitor^{HD} 15 SB

Contrast ratio	Max 650:1
Sight angle	±75°H, +50°/-60°V
Brightness	1500 Nits
Weight	4850 grams/10.6lbs
Power Cons.	50 W



CineMonitor *HD*¹⁵ *Studio*

15" CineMonitor *HD*¹⁵ *SB*

4:3
16:9
1:1.2.35

RFR™
process

TALLY

Waveform
Vector
Histogram

H&V FLIP
Auto
Reverse

Latency
<1Frame

ZOOM

D56 - D65
Manual
color cal

Safe area
markers



Carbon handle for CineMonitorHD

technology
Bright™
super

Titan is ideal for all Body-rig operators: The signal remains stable even when both the Transmitter and the Receiver are in motion. Titan is very user friendly: the 4 channels are pre-dialed and accessible with the flip of a switch. No tools required. Titan transmits & receives NTSC, PAL & SECAM color signals as well as Black & White. Titan operates on 9-36v DC via the Lemo 2 or the Hirose 6 connectors. The Hirose 6 connector carries video out (Receiver) or video in (Transmitter) and accepts DC in. Titan Transmitter and Receiver weigh 7oz (200g) each. Very compact they can be easily velcroed to any camera or monitor. Titan can be used in conjunction with any monitor.

Specifications

Input	CVBS 1V/75Ω
Standard	PAL/SECAM/NTSC
Frequency Band	2.4GHz
Modulation	FM
Transmit. Power	10mW
Channels	4
Channel frequencies	A= 2412.5 Mhz B= 2427.5 Mhz C= 2442.5 Mhz D= 2457.5 Mhz
Dimensions	105 (l) x 72 (w) x 25 (d)
Weight	200 grams
Power	10 - 36 VDC
Pwr Cons.	Power Consumption 1.9W max* Transmitter 1.8W max* Receiver
Video Connector	BNC
Accessory con.	HIROSE 6 (2 video in, 3 DC In, 6 Video out processed, 1, 4 & 5 Gnd)
Power connector	Lemo2 (+1, -2) and Hirose 6
Operating Temp	-25°C +65°C
Storage Temp	-40°C +80°C

Ordering Codes

904TS0102 TITAN PACK 1 (1Tx + 1Rx)
904TS0103 TITAN PACK2 (1Tx + 2Rx)



Oliver Cukor



MAIN APPLICATIONS

- VIDEO ASSIST
- FILM
- STEADICAM

Titan Rx & Tx

2.4 GHz

FCC
Certified

CE
Certified

IC
Certified

Latency
FREE



CETECOM

ICT Services GmbH

Confirmation of Test Results

Customer: Transvideo SA
 Auftraggeber: rue Marie Harlé-BP 526
 Zone Industrielle
 F-27135 Veneuil sur Avre Cedex (France)

Testing laboratory: CETECOM ICT Services GmbH
 Testlabor: RSC-RLS
 Untertürkheimer Str. 6-10
 D-66117 Saarbrücken

Object identification: TITAN™
 Prüfgegenstand: uWaves Transmission System

Object description: Video Transmission System
 Objektbeschreibung:

Test Report No.: 2-2782-01-01/02
 Prüfberichtsnummer:

Specifications: EN 300 440
 Prüfvorschrift(en): EN 300 489

Statement: No deviation from technical specification(s)/Standard(s) have been ascertained in the course of the performed tests.
 Ergebnis: Es wurden im Verlauf der durchgeführten Prüfung keine Abweichungen von den, durch die genannte(n) Prüfvorschrift(en)/Standard(s) vorgegebenen Anforderungen beobachtet.



M. Pfeiffer

R. D. [Signature]

Saarbrücken, 28. Mai. 02

Place, date:

(Manager of Laboratory)

accredited by Reg TP/DATeCH/DEKITZ under accreditation Certificate T11-P-G 166/88-00:

CETECOM ICT Services GmbH Untertürkheimer Str. 6 - 10 D-66117 Saarbrücken



Hermes and Pegasus are truly portable professional wireless tuners. These two new UHF/VHF multi-channel tuners can be used in conjunction with any monitor.

Hermes and Pegasus reception is highly stable thanks to the digital tuning and true synchronous demodulator.

Pegasus is much more compact than Hermes since it does not feature the battery compartment, nor the XLR4 power plug. It operates on 8-28v DC via a Hirose 6 connector.

Hermes is more universal: it receives 8-28v DC power in 3 different ways: via an XLR4 plug or a Hirose 6 connector and it will run for over 8 hours on 8 AA batteries.

Specifications

Output	CVBS 1V/75Ω
Standard	PAL/SECAM/NTSC
Frequency Band	UHF / VHF
Dimensions	105 (l) x 72 (w) x 25 (d)
Weight	Hermes 380 grams Pegasus 260 grams
Power	8 - 28 VDC 2.5W max
RF Connector	BNC
Video Connector	BNC
Accessory con.	HIROSE 6 (2 video in, 3 DC In, 6 Video out processed, 1, 4 & 5 Gnd)
Power connector	XLR4 (-1+4) on HERMES
Operating Temp	-20°C +50°C
Storage Temp	-40°C +80°C

Ordering Codes

HERMES	
904TS0001	M-N
904TS0002	L/BG
904TS0003	MODULUS/BG
PEGASUS	
904TS0004	M-N
904TS0005	L/BG
904TS0006	MODULUS/BG

Systems D/K/I optionals on L/BG or MODULUS/BG models.

MAIN APPLICATIONS

- VIDEO ASSIST
- NEWS
- STEADICAM

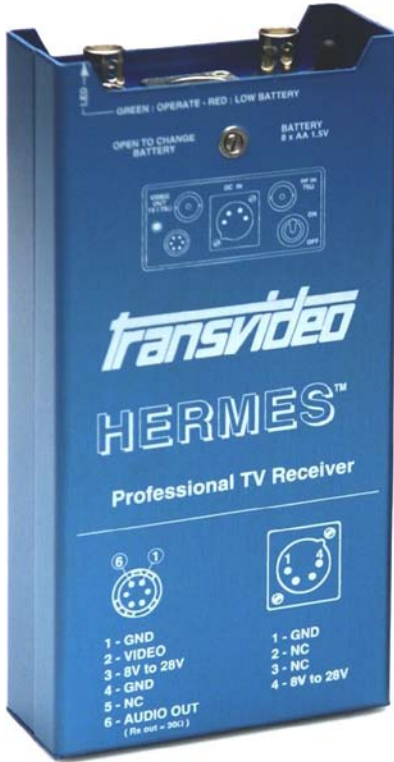
Hermes & Pegasus

UHF
VHF

FCC
Certified

CE
Certified

IC
Certified



transvideo — Format Converter

Plug the Format Converter in-line before your monitor (CRT or LCD) and it will display an Anamorphic or 16:9 image on a 4:3 screen. This accessory automatically generates Black letter-boxes to fill-in the rest of the 4:3 screen. Thanks to its digital processing, the Format Converter displays “unsqueezed” images with great accuracy, without cropping. The Format Converter accepts NTSC and PAL. With a weight of 10 oz (300g), it can be velcroed to the back of any monitor, including Transvideo flat panel monitors.



Specifications

Input	CVBS 1V/75Ω	Video Connector	BNC
Standard	PAL/SECAM/NTSC	Accessory con.	HIROSE 6 (2 video in, 3 DC In, 6 Video out processed, 1, 4 & 5 Gnd)
Dimensions	156 (l) x 74 (w) x 20 (d)	Power connector	Lemo2 (+1, -2) & Hirose 6
Weight	250 grams	Operating Temp	-25°C +65°C
Power	10 - 36 VDC	Storage Temp	-40°C +80°C
Pwr Cons.	Power Consumption 1.9W		

FramelineGenerator

Transvideo Frameline Generator displays 1, 2 or 3 framelines, a center cross and a marker. The framelines are very accurate and advanced functions include automatic centering of one frameline on another, and automatic centering of the framelines on the screen. The outside of the largest frameline may be shaded.

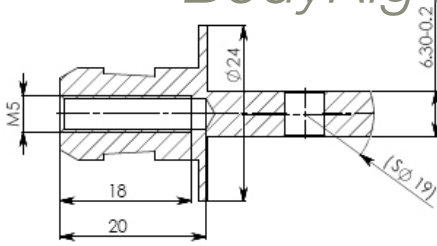


MAIN APPLICATIONS

- VIDEO ASSIST
- FILM
- STEADICAM

904TS0011 FRAMELINE
904TS0022 FORMAT CONVERTER

BodyRig Mounting System



SECTION A-A

RainbowII
RainbowII 16/9
Rainbow RF
Rainbow Xtreme



SpiritLevel
For CineMonitor

P/N: 918TS0086



SpiritLevel
For Rainbow

P/N: 918TS0085



Because the success of your shots is our main concern, the Transvideo BodyRig Mounting System is precisely manufactured with the finest materials.

The system is compatible with major existing equipments.

Transvideo offers several accessories to fix the monitors to the camera body.



3D SwingArm



ARRI Square adapter



DogBone



Knee joint



Knee joint + beta shoe



Moviecam adapter



Master Bracket



Spirit Level



Knee joint Master Bracket



3D Swing Arm + Clamp

Ordering Codes

918TS0002	Camera clamp with ball joint (SP05R-CAM)
918TS0022	Knee joint only (with 1/4"-20 & 3/8"-16 adapters)
918TS0027	Arri Square & Panavision Rod Adapter
918TS0033	Dogbone System Kit TSV
918TS0044	Knee Joint With SHOE Adapter
918TS0045	Moviecam Shoe Adapter
918TS0046	Dogbone Extension
918TS0071	Carbon Handle for Cine / 8.4" / 10.4"
918TS0072	6" CineMonitor II Body-Rig Mount for Steadicam
918TS0075	Steadicam Master mounting bracket for CineIII (on rod)
918TS0078	Slide ass'y 4" Starlite
918TS0079	Kit slide ass'y 4" Starlite (with knee joint)
918TS0085	Spirit Level Rainbow
918TS0086	Spirit Level CineMonitorIII
918TS0105	3D Swing Arm
918TS0128	3D Swing Arm with clamp

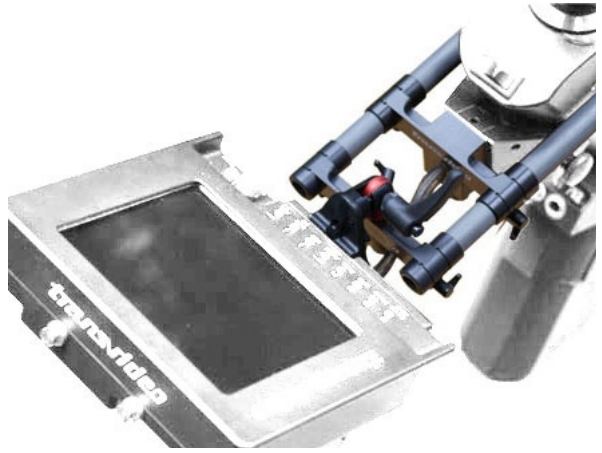
Accessories



1/4-20 to 3/8-16 adapter



3D Swing Arm heavy duty + clamp for slide



SuperMaster Mounting system



Carbon handle for CineMonitorHD



Shoulder strap pins



15-60 bridge for mini rods
Gives 2 x 3/8-16 to a video camera

Ordering Codes

918TS0153	SuperMaster Mounting kit
918TS0157	1/4-20 to 3/8-16 adapter for heavy duty swing arm.
918TS0148	3D Swing Arm Heavy duty with clamp for slide
918TS0151	Carbon handle for CineMonitorHD
918TS0143	Shoulder strap pins
918TS0155	15-60 bridge

SmartDV Battery Back

This external accessory snaps-on and is secured to the monitor with a 1/4-20 knob. The Smart Mini DV battery back steps up 7.2v Mini DV batteries to 12v DC. Excessive discharge of Mini DV batteries may cause the charger to no longer recognize the batteries, or to damage them. Transvideo Smart MiniDV battery backs feature a sophisticated voltage protection system preventing over-discharge of the Mini DV batteries. It will also shut off automatically when the voltage is too low. The Smart Mini DV battery backs provides an On/Off switch to easily cut power to the monitor, without removing the batteries. It also features an LED indicator: Green: power on, Orange: low battery, Red: auto shut-off. The Smart Mini DV battery backs offer two sockets and may be used with one or two batteries. 5 models of Smart MiniDV battery back exist to accomodate Canon, Sony, Panasonic, JVC, Samsung, and Hitachi mini DV batteries.



Ordering Codes

13W converter for 1 Li Battery

- 918TS0111 for CANON BP-511/522
- 918TS0121 for CANON BP-911/914/924 SAMSUNG
- 918TS0107 for JVC BNV-428U/480U
- 918TS0120 for PANASONIC CGR-D08A/D16A/D120/D220
- 918TS0122 for SONY L/M PANASONIC VW-VBD1 HITACHI VMBP13A

23W converter for 2 Li Batteries

- 918TS0102 for CANON BP-511/522
- 918TS0118 for CANON BP-911/914/924 SAMSUNG
- 918TS0101 for JVC BNV-428U/480U
- 918TS0117 for PANASONIC CGR-D08A/D16A/D120/D220
- 918TS0119 for SONY L/M PANASONIC VW-VBD1 HITACHI VMBP13A









TRANSVIDEO S.A.
Zone Industrielle
F-27135 Verneuil sur Avre
Tel +33 2 3232 2761
Fax +33 2 32 601479

USA :
TRANSVIDEO INTERNATIONAL
11712 Moorpark Street, 112B
North Hollywood, CA 91604
Tel 818-985 4903
Fax 818-985 4921

Email info@transvideo.fr

<http://transvideo.fr>
<http://transvideointl.com>

Transvideo S.A. stands behind each product
with two years of warranty against defect in materials and workmanship.
Specifications are subject to change without notice.

No liability can be accepted for any variation.

TRANSVIDEO is a registered brand, property of Transvideo S.A.

StarliteColor, StarliteDV, RainbowII, RainbowXtreme, RainbowII 16:9, RainbowII 16:9 RF,
RainbowUHF, CineMonitorIIIa, CineMonitorHD, TITAN, HERMES & PEGASUS, Format-
Converter, FramelineGenerator are trade marks of Transvideo S.A.